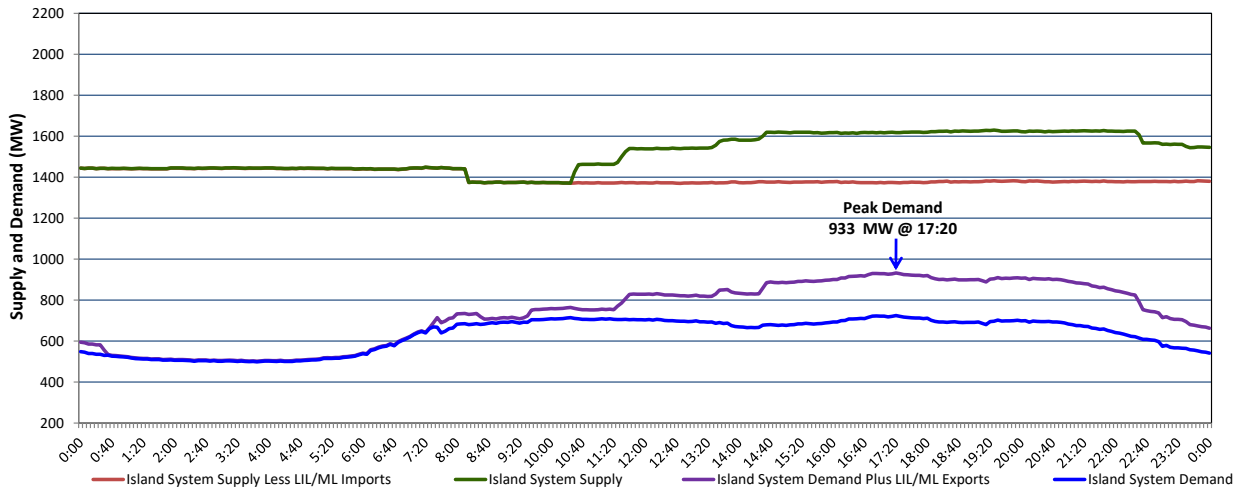


Newfoundland Labrador Hydro (NLH)

Supply and Demand Status Report Filed Tuesday, September 13, 2022 (Revised - September 15, 2022)

Section 1

Island Interconnected System Supply, Demand & Exports Actual 24 Hour System Performance For Monday, September 12, 2022



Supply Notes For September 12, 2022

1,2

- A As of 0800 hours, June 08, 2022, Holyrood Unit 1 unavailable due to planned outage (170 MW).
- B As of 0800 hours, July 31, 2022, Holyrood Unit 2 unavailable due to planned outage 150 MW (170 MW).
- C As of 1040 hours, August 27, 2022, Holyrood Unit 3 available but not operating (150 MW).
- D As of 1720 hours, September 11, 2022, Hinds Lake Unit available at 60 MW (75 MW).
- E As of 1748 hours, September 11, 2022, Cat Arm Unit 2 unavailable due to planned outage (67 MW).
- F At 0814 hours, September 12, 2022, Cat Arm Unit 1 unavailable due to planned outage (67 MW).

Section 2

Island Interconnected Supply and Demand

Tue, Sep 13, 2022	Island System Outlook ³		Seven-Day Forecast	Temperature (°C)		Island System Daily Peak Demand (MW)	
				Morning	Evening	Forecast	Adjusted ⁷
Available Island System Supply: ⁵	1,630	MW	Tuesday, September 13, 2022	14	12	990	990
NLH Island Generation: ^{4,8}	1,055	MW	Wednesday, September 14, 2022	13	13	755	755
NLH Island Power Purchases: ⁶	115	MW	Thursday, September 15, 2022	16	17	745	745
Other Island Generation:	215	MW	Friday, September 16, 2022	14	13	760	760
ML/LIL Imports:	245	MW	Saturday, September 17, 2022	10	11	780	780
Current St. John's Temperature & Windchill:	13 °C	N/A	Sunday, September 18, 2022	11	12	765	765
7-Day Island Peak Demand Forecast:	990	MW	Monday, September 19, 2022	10	7	820	820

Supply Notes For September 13, 2022

3

- Notes:
1. Generation outages for running and corrective maintenance are included. These are not unusual for power system operations. They generally do not impact customer supply. The power system operators schedule outages to system equipment whenever possible to coincide with periods when customer demands are low and sufficient supply reserves are available. However, from time to time equipment outages are necessary and reserves may be impacted.
 2. Due to the Island system having no synchronous connections to the larger North American grid, when there is a sudden loss of large generating units there may be a requirement for some customer's load to be interrupted for short periods to bring generation output equal to customer demand. This automatic action of power system protection, referred to as under frequency load shedding (UFLS), is necessary to ensure the integrity and reliability of system equipment. Under frequency events have typically occurred 5 to 8 times per year on the Island Interconnected System and the resultant customer load interruptions are generally less than 30 minutes. With the activation of the Maritime Link frequency controller during the winter of 2018, UFLS events have occurred less frequently.
 3. As of 0800 Hours.
 4. Gross output including station service at Holyrood (24.5 MW) and improved NLH hydraulic output due to water levels (35 MW).
 5. Gross output from all Island sources (including Note 4).
 6. NLH Island Power Purchases include: CBPP Co-Gen, Nalcor Exploits, Rattle Brook, Star Lake, Wind Generation and capacity assistance (when applicable).
 7. Adjusted for curtailable load, market activities and the impact of voltage reduction when applicable.
 8. Due to limitations inherent in the design of combustion turbines, the output of combustion turbines may be reduced in the event that ambient temperatures exceed the threshold.

Section 3

Island Peak Demand Information Previous Day Actual Peak and Current Day Forecast Peak

Mon, Sep 12, 2022	Actual Island Peak Demand ⁹	17:20	933 MW
Tue, Sep 13, 2022	Forecast Island Peak Demand		990 MW

- Notes: 9. Island Demand / LIL / ML Exports (where applicable) is supplied by NLH generation and purchases, plus generation owned and operated by Newfoundland Power and Corner Brook Pulp & Paper (Deer Lake Power, DLP).